

## CURRICULUM VITAE

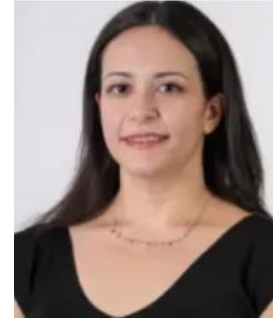
**1. Name-Surname:** Nergis Hazal YILMAZTÜRK

**2. Title:** Lecturer, PhD

**3. Education:** PhD

**4. Organization:** 2015 - ongoing  
TED University, Department of Educational Sciences  
Psychological Counseling and Guidance Program

**5. Contact:** hazal.yilmazturk@tedu.edu.tr



Degree	Field	Organization	Year
PhD	Psychological Counseling and Guidance	Middle East Technical University	2024
Master's degree	Psychological Counseling and Guidance	Middle East Technical University	2018
Erasmus LLP	Psychology & Pedagogy	Kazimierz Wielki University (Uniwersytet Kazimierza Wielkiego w Bydgoszczy) (National Agency scholarship)	2013
Bachelor's degree	Psychological Counseling and Guidance	Başkent University (with grant, Top Scoring Student of 2015)	2015
High School		TED Ankara College Private High School	2011

### 6. Publications:

#### 6.1. Books and book chapters:

- Özgül-Torun, T., Yilmaztürk, N.H., Maraşlı, & Çok, F. (June 2026). *Attitudes towards sharenting*. (Eds.) Lendvai, G.F., Vizcaíno-Verdú, A, Velicu, A, Koltay, A. Transdisciplinary Perspectives on Sharenting: Parenting, Privacy, and Consent. Routledge.
- Yilmaztürk N. H., Özgül-Torun T., Er S. S., & Çok F. (2023). *A new dimension in child development: Sharenting*. (Ed.) Seval Erden-Çınar. Child Psychology. Pegem.
- Atay, B. & Yilmaztürk, N.H. (2023). *Sexuality in Close Relationships*. (Ed.) S.Burcu Üçok. Close Relationships. Nobel.
- Yilmaztürk, N.H. (2022). *Eating disorders in children and adolescents*. (Ed.)

Begüm Serim-Yıldız & S.Burcu Üçok. Psychological Counseling in Children and Adolescents. Nobel.

- Voltan-Acar, N., Aracı-İyiaydın, A., Atay, B., Barburoğlu, Y., Yeler, Z., & **Yılmaztürk, N.H.** (2020). *Psychological Counseling and Guidance Dictionary*. Nobel.

## 6.2. Articles in international refereed journals:

- **Yılmaztürk, N.H.** (2026). Emotions on the menu: Reflexive thematic analysis of emotional eating in academic context. *Acta Psychologica*, 263, <https://doi.org/10.1016/j.actpsy.2026.106288> (SSCI)
- **Yılmaztürk, N.H.**, Serim-Yıldız, B., & Grzankowska, I. (submitted). The role of cognitive flexibility on the relationship between coronavirus anxiety and eating attitudes of Polish and Turkish university students. *BMC Psychology*. (SSCI).
- **Yılmaztürk, N.H.**, & Sümer, Z. (submitted). Eating the emotions or emotional eating? A phenomenological study on adolescents emotional eating. *Eating Behavior*. (SSCI).
- Atay, B., **Yılmaztürk, N.H.**, Autin, K., & Kim, T. (in progress). Work volition and burn out among Turkish college students. *Journal of Career Development*. (SSCI).
- Atay, B., **Yılmaztürk, N.H.**, Autin, K., & Kim, T. (in progress). *Development of work volition scale*. *Journal of Vocational Behavior*. (SSCI).
- Atay, B., **Yılmaztürk, N.H.**, Autin, K., & Kim, T. (in progress). Voices from the transition to work: A qualitative inquiry into need satisfaction, decent work, and burnout among university students. *Journal of Counseling Psychology*. (SSCI)
- **Yılmaztürk, N.H.**, Özgül-Torun, T., Atay, B., & Çok, F. (in progress). Development of sharenting attitude scale. *Psychological Assessment* (SSCI).
- Serim-Yıldız, B., **Yılmaztürk, N.H.**, & Duffrene, R. (in progress). Adaptation of ethical decision-making scale-revised to Turkish culture. *Measurement and Evaluation in Counseling and Development*. (SSCI).
- Atay, B., **Yılmaztürk, N. H.**, Yazar, Z. Ö., Akyazı, G. K., Allan, B. (in progress). Examining the association between underemployment dimensions and mental and work outcomes.
- **Yılmaztürk, N.H.**, Er, S., Özgül, T., & Çok, F. (2022). Parents' shares on Instagram in the early days of COVID-19 pandemic. *Turkish Journal of Education* (ESCI).
- **Yılmaztürk, N.H.**, Demir, A. & Çelik-Örücü, M. (2022). The mediator role of emotion-focused coping on the relationship between perceived stress and emotional eating. *Trends in Psychology*. <https://doi.org/10.1007/s43076-022-00142-1> (APA PsyInfo).
- Maraşlı, M., Er, S., **Yılmaztürk, N.H.** & Çok, F. (2016). Parents' shares on social networking sites about their children: Sharenting. *Anthropologist*, 24(2), 399-406. (Scientific World Index).

### 6.3. Paper presentations presented at international conferences and published at conference proceedings:

- **Yılmaztürk, N.H.** & Serim-Yıldız, B. (2024). *Qualitative investigation of caregiver practices across adverse life experiences*. 33<sup>rd</sup> International Congress of Psychology, Prague, Czech Republic.
- Serim-Yıldız, B., Erdoğan, T. & **Yılmaztürk, N.H.** (2022). *Trauma-informed models for preschooler parents: A content analysis*. International Child and Adolescent Trauma Congress, Türkiye.
- Çok, F., **Yılmaztürk, N.H.**, Özgül, T. & Er, S. (2022). *To what extent are parents aware of the danger related to sharing their children on social media?* International Child and Adolescent Trauma Congress, Izmir, Türkiye.
- **Yılmaztürk, N.H.**, & Serim-Yıldız, B. (2021). *Ethical decision-making models in GPC*. 22<sup>nd</sup> International Congress of GPC, Muş, Türkiye (online).
- Serim-Yıldız, B., & **Yılmaztürk, N.H.** (2021). *Counseling students' perceptions related to ethicality with regard to socio-cultural differences*. 32<sup>nd</sup> International Congress of Psychology, Prague, Czech Republic.
- **Yılmaztürk, N.H.**, Serim-Yıldız, B., & Erdur-Baker, Ö. (2021). *The mediating role of rumination on the relationship between gender and fear*. International Congress on Adolescence and Youth Research, Izmir, Türkiye.
- **Yılmaztürk, N. H.**, Demir, A., & Çelik-Örücü, M. (2019). *The relationship between perceived stress and emotional eating: The role of emotion focused coping*. 33<sup>rd</sup> Annual Conference of European Health Psychology Society, Dubrovnik, Croatia.
- **Yılmaztürk, N. H.** & Yılmaz, O. (2018). *Emerging career information needs in the transition to higher education*. 20th International GPC Congress, Samsun, Türkiye.
- Aracı-İyiyaydın, A., **Yılmaztürk, N.H.**, Serhatoğlu, S., & Çok, F. (2017). *Social networking sites and adolescence: A content analysis of published studies*. 18<sup>th</sup> European Conference on Developmental Psychology, Utrecht, The Netherlands.
- Çok, F. & **Yılmaztürk, N.H.** (2017). *Community service experience of undergraduate counseling students*. Constructing Active Citizenship with European Youth Conference, Athens, Greece.
- **Yılmaztürk, N.H.**, Ünal, B., Temizöz, T., & İnan, A. (2017). *Relationship between community service involvement and basic empathy levels: Determination and improvements of community service participation among TED University Students*, Constructing Active Citizenship with European Youth Conference, Athens, Greece.
- Maraşlı, M., Er, S., **Yılmaztürk, N. H.**, & Çok, F. (2015). *Parents' shares on social networking sites about their children*, II. Cyprus International Education Research Congress, Kyrenia.

#### 6.4. Articles in national refereed journals:

- **Yılmaztürk, N.H. & Yılmaz, O.** (2025). Exploring career information needs in the transition to higher education. *Journal of Career Counseling*, 8(2), 73-85
- Serim-Yıldız, B. & **Yılmaztürk, N.H.** (2023). Ethical position of prospective counselors with relation to mindfulness. *Electronic Journal of Social Sciences (TÜBİTAK ULAKBİM TR Dizin)*.
- Üçok, S.B., **Yılmaztürk, N.H.** & Atay, B. (2023). Facebook jealousy and attachment: The mediator role of jealousy and loneliness. *Adiyaman University Journal of Social Sciences (TÜBİTAK ULAKBİM TR Dizin)*.
- Özgül, T., Er, S., **Yılmaztürk, N.H.**, & Çok, F. (2022). Parents' social media shares about their children (*Sharenting*). *Ankara University Journal of Educational Sciences*, 55(1), 239-262. (TÜBİTAK ULAKBİM TR Dizin).
- Aracı-İyiyaydın, A., Çok, F., **Yılmaztürk, N. H.** & Serhatoğlu, S. (2019). Social media sites and adolescence: Content analysis of published studies. *Başkent University Journal of Education*, 6(2), 225-235. (TÜBİTAK ULAKBİM TR Dizin).

#### 6.5. Paper presentations presented at national conferences and published at conference proceedings:

- Demirutku, K., Yeler, Z., & **Yılmaztürk, N.H.** (2018). Examining the relationships between social responsibility level, attitudes towards asylum seekers and altruistic intentions in pre-service teachers. I. *Asylum Seekers and Refugees Psychological Health Symposium*, Ankara.
- **Yılmaztürk, N.H.** & Aracı-İyiyaydın, A. (2016). Psychological analysis of two TV characters: Fiona Gallagher (*Shameless*) and Gregory House (*House M.D.*). *V. Psychology and Art Symposium*, Ankara.

#### 7. Projects:

- **TechnoFest -Technological Practices in Psychology:** KidLiz (Team ID: 614307) - *Supervisor*
- **TÜBİTAK 3501:** Trauma-Informed Models for Preschooler Parents – *Researcher* (submission phase, *Supervisor:* Dr. Begüm Serim-Yıldız)
- **TÜBİTAK 2237:** Qualitative Research Education: From Theory to Practice (Kuramdan Uygulamaya Nitel Araştırma Eğitim; KUNA) III – *Lecture Assistant* (2021, *Supervisor:* Prof. Dr. Sibel Balcı)
- **TEDU LAD (Bachelor Research Fund) – Project Supervisor** (2017). Relationship between community service involvement and basic empathy levels: Determination and improvements of community service participation among TED University

students (*Project Team*: senior GPC students of 2017, Burcu Ünal, Tuğçe Temizöz, Aybüke İnan)

## 8. Citations

### 8.1. Google Scholar

	Hepsi	2021 yılından bugüne
Alıntılar	260	212
h-endeksi	4	4
i10-endeksi	3	3

PUBLICATION	CITATION FREQ.	YEAR
<a href="#">Parents' shares on social networking sites about their children:Sharenting</a> M Marasli, E Suhendan, NH Yilmazturk, F CokThe Anthropologist 24 (2), 399-406	202	2016
<a href="#">The Mediator Role of Emotion-Focused Coping on the RelationshipBetween Perceived Stress and Emotional Eating</a> NH Yilmazturk, A Demir, M Celik-OrucuTrends in Psychology, 1-17	29	2022
<a href="#">Parents' shares on Instagram in the early days of the COVID-19pandemic</a> ER Sühendan, NH YILMAZTÜRK, T ÖZGÜL, ÇOK Figen Turkish Journal of Education 11 (1), 1-15	21	2022
<a href="#">Anababaların Çocuklarıyla İlgili Sosyal Medya Paylaşımları</a> ER Sühendan, T ÖZGÜL, NH YILMAZTÜRK, ÇOK FigenAnkara University Journal of Faculty of Educational Sciences (JFES), 1-24	4	2022
<a href="#">Social Networking Sites and Adolescence: A Content Analysis ofthe Published Studies</a> AA İyiyaydın, F Çok, NH Yilmaztürk, SU SerhatoğluBaşkent University Journal of Education 6 (2), 225-235	2	2019
<a href="#">Exploring Career Information Needs in the Transition to HigherEducation</a> NH Yilmaztürk, O YılmazKariyer Psikolojik Danışmanlığı Dergisi 8 (2), 73-85	1	2025
<a href="#">ETHICAL POSITIONS OF PROSPECTIVE COUNSELORS WITHRELATION TO MINDFULNESS</a> NH Yilmaztürk, B Serim-Yıldız Elektronik Sosyal Bilimler Dergisi 22 (88), 1643-1652	1	2023
<a href="#">Emotions on the menu: Reflexive thematic analysis emotional eating in academic context</a> NH Yilmazturk . Psychologica 263, 106288		2026
<a href="#">A PHENOMENOLOGICAL STUDY ON EMOTION/ EATINGEXPERIENCES OF ADOLESCENTS</a> NH YilmaztürkMiddle East Technical University		2024
<a href="#">FACEBOOK KISKANÇLIĞI VE BAĞLANMA: KISKI VEYALNIZLIĞIN ARACI ROLÜ.</a> SB ÖZGÜLÜK ÜÇOK, NH YILMAZTÜRK, B ATAYAdıyaman Üniversitesi Sosyal E Dergisi 16 (45)		2023

The relationship between perceived stress and emotional eating: The role of emotion focused coping NH Yilmaztürk, AG Demir, M Çelik Örücü

2019

Relationship Between Community Service Involvement and Basic Empathy Levels: Determination and Improvements of Community Service Participation Among TED University Students NH Yilmaztürk

2018

## 8.2. Avesis Summary

<b>Publication</b>	31
<b>Publication (WoS)</b>	2
<b>Publication (Scopus)</b>	3
<b>Citation (Scopus)</b>	56
<b>H-Index (Scopus)</b>	2
<b>Atıf (Scholar)</b>	162
<b>H-Index (Scholar)</b>	3
<b>Citation (Sobiad)</b>	1
<b>H- Index (Sobiad)</b>	1
<b>Citation (Other)</b>	23
<b>Project</b>	1
<b>Open Access</b>	3

### BM Sürdürülebilir Kalkınma Amaçları



(/usermetrics/searchlistmodal?Sdgid=3&NetworkUserId=48001007)



(/usermetrics/searchlistmodal?Sdgid=4&NetworkUserId=48001007)



(/usermetrics/searchlistmodal?Sdgid=10&NetworkUserId=48001007)



(/usermetrics/searchlistmodal?Sdgid=17&NetworkUserId=48001007)

## 9. Bilimsel Yayınlarda Hakemlikler

Nisan 2026

**Bartın Üniversitesi Eğitim Fakültesi Dergisi**

Hakemli Bilimsel Dergi

Ocak 2026

**Bartın Üniversitesi Eğitim Fakültesi Dergisi**

Hakemli Bilimsel Dergi

Ekim 2024

**CURRENT PSYCHOLOGY**

SSCI Kapsamındaki Dergi

Mayıs 2024

**Bartın Üniversitesi Eğitim Fakültesi Dergisi**

Hakemli Bilimsel Dergi

Mayıs 2024

**CURRENT PSYCHOLOGY**

SSCI Kapsamındaki Dergi

Nisan 2024

**CURRENT PSYCHOLOGY**

SSCI Kapsamındaki Dergi

Nisan 2024

**CURRENT PSYCHOLOGY**

SSCI Kapsamındaki Dergi

Mart 2024

**PSYCHOLOGICAL REPORTS**

SSCI Kapsamındaki Dergi

Mart 2024

**PSYCHOLOGICAL REPORTS**

SSCI Kapsamındaki Dergi

Mart 2024

**CURRENT PSYCHOLOGY**

SSCI Kapsamındaki Dergi

Ocak 2024

**CURRENT PSYCHOLOGY**

SSCI Kapsamındaki Dergi

Ocak 2024

**CURRENT PSYCHOLOGY**

SSCI Kapsamındaki Dergi

Ocak 2022

**PSYCHOLOGICAL REPORTS**

SSCI Kapsamındaki Dergi

Kasım 2021

**CURRENT APPROACHES IN PSYCHIATRY**

Hakemli Bilimsel Dergi

## 10. Courses Given:

- PSCG 409/PCG407 - Practicum in Individual Counseling I - Supervision
- PSCG 412/PCG408 - Practicum in Individual Counseling II - Supervision

- PSCG 401/EDUC 411 - Practicum of Counseling in Schools I
- PSCG 402/EDUC 412 - Practicum of Counseling in Schools II
- PSCG 102/PCG 106 - Introduction to Psychological Counseling and Guidance
- PSCG 380/PCG 208 - Non-testing Techniques
- PSCG 430/PCG 302- Psychology of Eating
- PSCG 301/PCG 312 - Psychological Counseling with Children and Adolescents
- PCG 523 – Methods and Techniques of Counseling with Children and Adolescents (graduate course)

#### **11. Administrative Duties/Organizational and Professional Services:**

- (2019-...) TEDU, Faculty of Education, Chair of Career Development & Graduate Follow-up Commission
- (2023-2025) TEDU, Faculty of Education, Schedule Commission, Coordinator of Dept. of GPC
- (2018-2021) TEDU, Faculty of Education, Promotion Commission
- (2018-2021) TEDU, Faculty of Education, Organization Commission
- (2016-2021) TEDU, Faculty of Education, Web and Social Media Commission

#### **12. Affiliations:**

- Turkish Psychological Counseling and Guidance Association
- European Health Psychology Society (EHPS)
- Adolescence and Youth Research Association
- Middle East Technical University Alumni
- TED Ankara College Alumni

#### **13. Grants:**

- Başkent University Psychological Counseling and Guidance Program, *Top Scoring Student of Class of 2015*
- National Agency, Erasmus LLP, 2013

#### **14. Professional Development:**

- ACT (Acceptance and Commitment Therapy) Bootcamp EU, Utrecht (Prof. Steven Hayes, Prof. Robyn Walser, Dr. Gijs Jansen, 28 hours, 2025)
- ACT (Acceptance and Commitment Therapy) SUPERVISION (2025, ACT

Turkey, Dr. İbrahim Bilgen, 42 hours)

- Process Based Therapy (PBT; 2025, ACT Turkey, Dr. İbrahim Bilgen, 27 hours)
- ACT (Acceptance and Commitment Therapy) ADVANCED LEVEL (ACT Turkey, Dr. İbrahim Bilgen, 21 Hours, 2025)
- ACT (Acceptance and Commitment Therapy) INTERMEDIATE (ACT Turkey, Dr. İbrahim Bilgen, 23 Hours, 2024)
- ACT (Acceptance and Commitment Therapy) COMPREHENSIVE-BASIC TRAINING (ACT Turkey, Dr. İbrahim Bilgen, 40 Hours, 2024)
- Cognitive Behavioral Therapy – Skills Modul (30 hours, Prof. Dr. Hakan Türkçapar & CBPA, 2022)
- Cognitive Behavioral Therapy – Primary Modul (50 hours, Prof. Dr. Hakan Türkçapar & CBPA, 2021)
- Emotional Eating (by Psk. & Dyt. Alara Kerimler, 2021)
- Eating Disorders (by Psk. & Dyt. Alara Kerimler, Modul 1&2, 2020)
- Structural Equation Modeling During Publication and Thesis Processes (by Prof. Dr. Ömer Faruk Şimşek, 2020)
- Applying mindfulness techniques to enhance health and well-being (by Dr. Rebecca Acabchuk, Suzanne Meunier, Natalie Griffin; EHPS, 2019)
- Meta-Thematic Analysis (Anı Winter School, 2020)
- NVIVO for Beginners (Anı Winter School, 2020)
- Introduction to CBT (by Dr. Monica Wilkoszcz; University of Kazimier Wielki, 2013)
- Psychodrama (*12 weeks* by Psycho-dramatist Prof. Dr. Türkan Doğan and Psycho-dramatist Psy. Coun. Specialist Mine Kazak, Başkent University)
- Art Critique in Early Childhood Art Education (Birge Art, Design and Architecture Atelier for Children)
- Effective communication and Body Language (Association of TED Alumni)
- Intervention Prevention Studies Workshop (by Prof. Hâkan Statin and Prof. Metin Özdemir, TEDU SEM/)
- Unconsciousness Techniques in Guidance (Association of TED Alumni)
- Special Learning Difficulties: School & Families (TEDU)

#### **15. Other Experiences (Seminars, Media, etc.):**

- Peer Psychological Counselor at Başkent University, 2014 Summer
- Counseling Intern at Gazi University Hospital Adult Psychiatry Service, 2014 (*14 weeks* within Mental Health Course at Başkent University)

- Genç Düşünce (*Young Idea*), Kanal B (2015)
- Doğru Tercih (*Right Choice*), Kanal B (2019)
- Özne (*Subject*), Radio TEDU (2022)
- *TEDU 400: Emotional Eating & Eating Disorders* - Developmental seminar to university students (TEDU Center of Teaching and Learning, 2022 & 2025)
- Student recruitment assessment process - Academic team member (2025)
- Several seminars on variety of topics (including *resilience, sharenting, communication skills, emotional eating, eating disorders*) to school counselors, students, and teachers in K-12 state and private schools